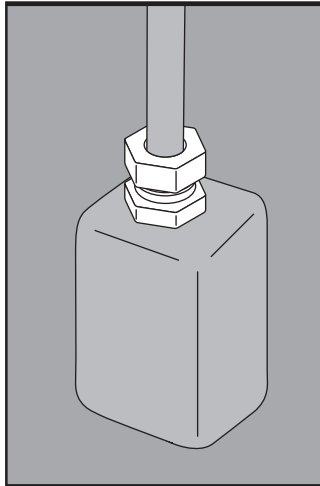
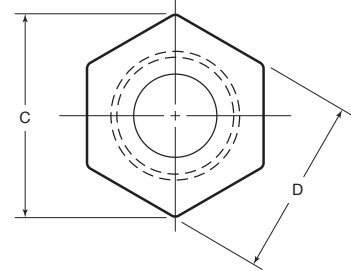
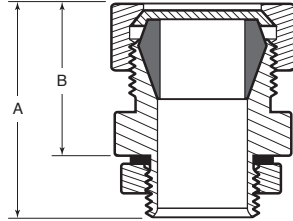


# STAINLESS STEEL CORD GRIP CONNECTORS



## APPLICATION

- Designed to provide a weather-tight means of terminating flexible cord or cable in devices, boxes, and enclosures
- Manufactured in stainless steel to help prevent corrosion
- Can be installed using ordinary hand tools and require little maintenance or repair
- Provided in a bright, polished finish that does not require touch up or painting



Part Number	Cable Size	Cable Range (in.)	Weight/ 100 (lbs.)	Dimension (in.)			
				A	B	C	D
CG50-125-188	1/2 in.	.125 - .188	40	1.87	1.37	1.56	1.38
CG50-188-250	1/2 in.	.188 - .250	40	1.87	1.37	1.56	1.38
CG50-250-313	1/2 in.	.250 - .313	40	1.87	1.37	1.56	1.38
CG50-313-375	1/2 in.	.313 - .375	40	1.87	1.37	1.56	1.38
CG50-375-438	1/2 in.	.375 - .438	40	1.87	1.37	1.56	1.38
CG50-438-500	1/2 in.	.438 - .500	40	1.87	1.37	1.56	1.38
CG50-500-563	1/2 in.	.500 - .563	40	1.87	1.37	1.56	1.38
CG50-563-610	1/2 in.	.563 - .610	40	1.87	1.37	1.56	1.38
CG75-188-250	3/4 in.	.188 - .250	50	2.13	1.51	1.71	1.50
CG75-250-313	3/4 in.	.250 - .313	50	2.13	1.51	1.71	1.50
CG75-313-375	3/4 in.	.313 - .375	50	2.13	1.51	1.71	1.50
CG75-375-438	3/4 in.	.375 - .438	50	2.13	1.51	1.71	1.50
CG75-438-500	3/4 in.	.438 - .500	50	2.13	1.51	1.71	1.50
CG75-500-563	3/4 in.	.500 - .563	50	2.13	1.51	1.71	1.50
CG75-563-625	3/4 in.	.563 - .625	50	2.13	1.51	1.71	1.50
CG75-625-688	3/4 in.	.625 - .688	50	2.13	1.51	1.71	1.50
CG75-688-750	3/4 in.	.688 - .750	50	2.13	1.51	1.71	1.50
CG75-750-810	3/4 in.	.750 - .810	50	2.13	1.51	1.71	1.50
CG100-375-438	1 in.	.375 - .438	75	2.27	1.61	2.06	1.81
CG100-438-500	1 in.	.438 - .500	75	2.27	1.61	2.06	1.81
CG100-500-563	1 in.	.500 - .563	75	2.27	1.61	2.06	1.81
CG100-563-625	1 in.	.563 - .625	75	2.27	1.61	2.06	1.81
CG100-625-688	1 in.	.625 - .688	75	2.27	1.61	2.06	1.81
CG100-688-750	1 in.	.688 - .750	75	2.27	1.61	2.06	1.81
CG100-750-813	1 in.	.750 - .813	75	2.27	1.61	2.06	1.81
CG100-813-875	1 in.	.813 - .875	75	2.27	1.61	2.06	1.81
CG100-875-938	1 in.	.875 - .938	75	2.27	1.61	2.06	1.81
CG100-938-1000	1 in.	.938 - 1.000	75	2.27	1.61	2.06	1.81

## PRODUCT DETAILS

### Material:

- Body: CF8M (316 SS)
- Rubber Bushing: EPDM
- Metal Ring: 316 SS
- Nut: CF8M (316 SS)
- Gasket: Neoprene
- Locknut: 316 SS

**Country of Origin:** 100%

Made in USA

