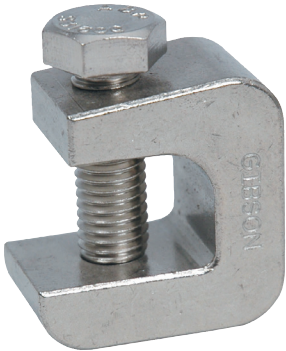
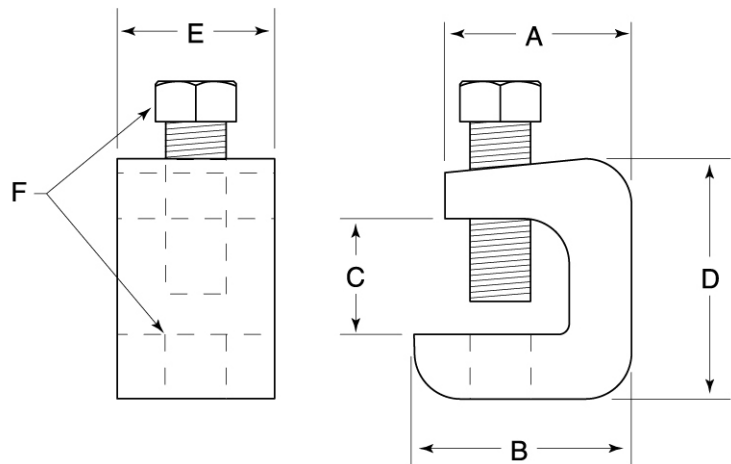
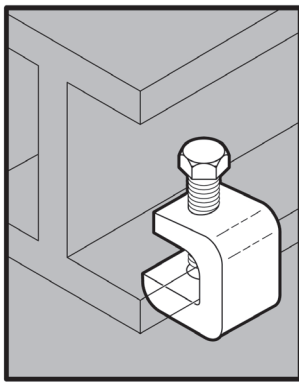


STAINLESS STEEL 2100 SERIES BEAM CLAMPS



APPLICATION

- Similar to 2000 Series Beam Clamps; however are designed without back attachment hole
- Provide a means of attachment to a structural member without having to drill holes
- Manufactured in stainless steel to help prevent corrosion
- Can be installed using ordinary hand tools and require little maintenance or repair
- Provided in a bright, polished finish that does not require touch up or painting



PRODUCT DETAILS

Material:

- Body: 316 SS
- Bolt: 316 SS

Standards:

MPIF35, ASTM F593

Country of Origin: Product may contain imported component. Body 100% Made in USA; bolt may or may not be of U.S. origin.

Part Number	Size	Load Rating* (lbs.)	Weight/ 100 (lbs.)	Dimension (in.)					
				A	B	C	D	E	F
2103	3/8 in.	400	51	1.51	1.76	0.89	1.90	1.00	3/8 - 16 UNC
2104	1/2 in.	600	55	1.51	1.76	0.89	1.90	1.00	1/2 - 13 UNC

* Based on upright installation, as shown from bottom attachment hole.



© 2018 GIBSON STAINLESS & SPECIALTY, INC. - REV 3/2018

PO BOX 847, GREENSBURG, PA 15601
PHONE: 1-800-945-4316 • FAX: 724-838-1544

WEB: GIBSONSTAINLESS.COM