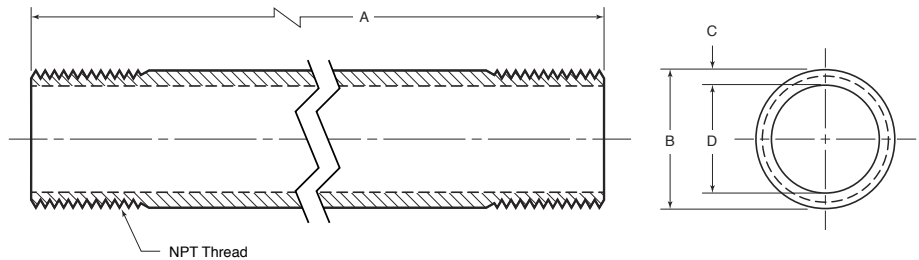
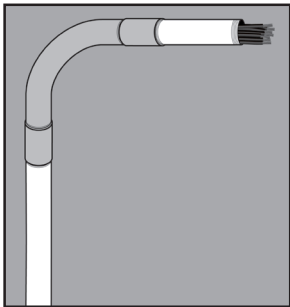


STAINLESS STEEL CONDUIT



APPLICATION

- Rigid/Heavywall, Schedule 40
- Provides a means of protection for wiring and cable in electrical systems
- Threaded on both ends, NPT
- Offered in Type 316 SS and Type 304 SS
- Supplied complete with one coupling and a color-coded thread protector for opposite end
- Stocked in 10' lengths; custom lengths can be made available upon request
- Manufactured in stainless steel to help prevent corrosion
- Can be installed using ordinary hand tools and require little maintenance or repair
- Provided in a bright, polished finish that does not require touch up or painting



*shown without coupling

PRODUCT DETAILS

Material:

316 SS and 304 SS

Standards:

ASTM A312

Country of Origin:

Manufactured in USA

UL File Number:

DYWV.E300683
(Standard 6A)

Canada UL File Number:

DYWV7.E300683
(Standard 6A)

Part Number	Size	Weight/ Stick (lbs.)	DJW (Threads per Inch)	Length w/o Coupling "A" (ft.)	Outside Diameter "B" (in.)	Wall Thickness "C" (in.)	Inside Diameter "D" (in.)
CND50	½ in.	8	14	9-11¼	0.84	0.11	0.62
CND75	¾ in.	11	14	9-11¼	1.05	0.11	0.82
CND100	1 in.	16	11-½	9-11	1.32	0.13	1.05
CND125	1¼ in.	22	11-½	9-11	1.66	0.14	1.38
CND150	1½ in.	26	11-½	9-11	1.90	0.15	1.61
CND200	2 in.	35	11-½	9-11	2.38	0.15	2.07
CND250	2½ in.	55	8	9-10½	2.88	0.20	2.47
CND300	3 in.	72	8	9-10½	3.50	0.22	3.07
CND400	4 in.	100	8	9-10¼	4.50	0.24	4.03

Type 316 SS part numbers listed above; Type 304 SS products are denoted by adding "-304SS."
For example: CND75-304SS



© 2018 GIBSON STAINLESS & SPECIALTY, INC. - REV 3/2018

PO BOX 847, GREENSBURG, PA 15601
PHONE: 1-800-945-4316 • FAX: 724-838-1544

WEB: GIBSONSTAINLESS.COM